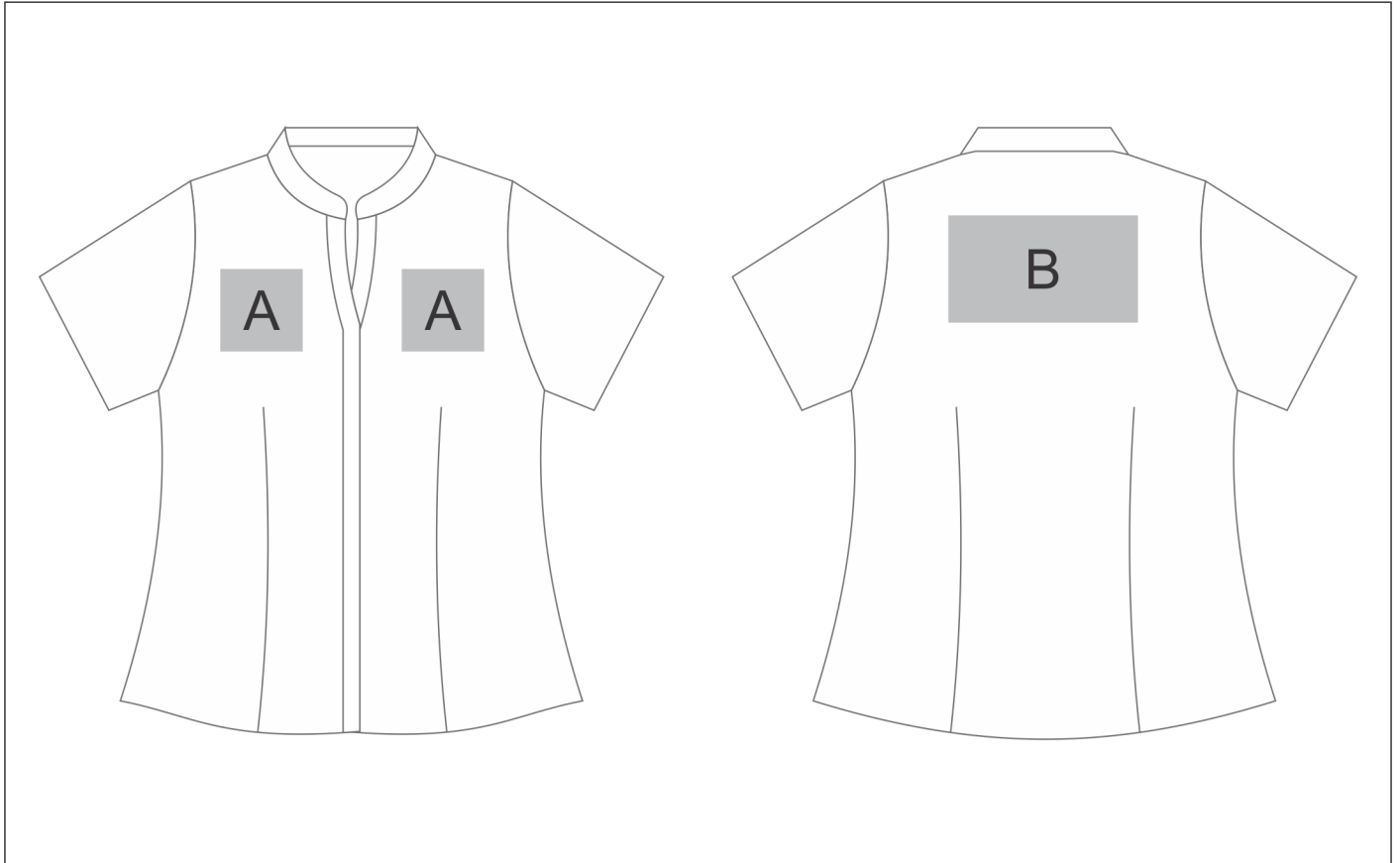


BAS-11209

Ladies Short Sleeve Ava Blouse



Need to know:

- Includes 1-Position Digital Transfer (setup fees apply).
- Cannot guarantee a 100% straight branding on any clothing item with check or stripe detail.
- DTC/EMB inclusive Parameters: Left/Right Chest or Back = 100mm x 100mm.

Branding Options:

Position A

1. Digital Transfer Clothing A6 (DTC-A6)
Full Colour
Size: 100mm wide x 100mm high
2. Silicone (STP-A)
N/A
Size: 30mm wide x 30mm high
3. Silicone (STP-A)
N/A
Size: 30mm wide x 30mm high
4. Silicone (STP-B)
N/A
Size: 50mm wide x 50mm high
5. Silicone (STP-C)
N/A
Size: 80mm wide x 80mm high
6. Silicone (STP-D)
N/A
Size: 100mm wide x 40mm high

Position B

1. Digital Transfer Clothing A6 (DTC-A6)
Full Colour
Size: 148mm wide x 105mm high
2. Digital Transfer Clothing A5 (DTC-A5)
Full Colour
Size: 200mm wide x 130mm high
3. Silicone (STP-B)
N/A
Size: 50mm wide x 50mm high
4. Silicone (STP-C)
N/A
Size: 80mm wide x 80mm high
5. Silicone (STP-D)
N/A
Size: 120mm wide x 40mm high